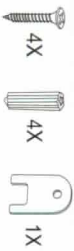
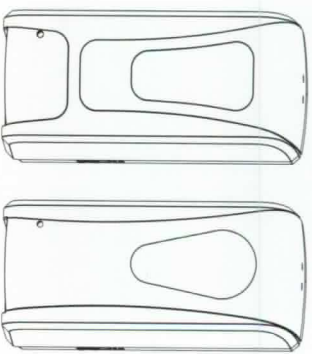
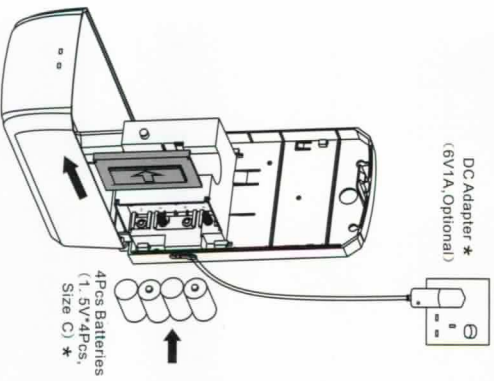


SENSOR FOAM SOAP DISPENSER INSTALLATION



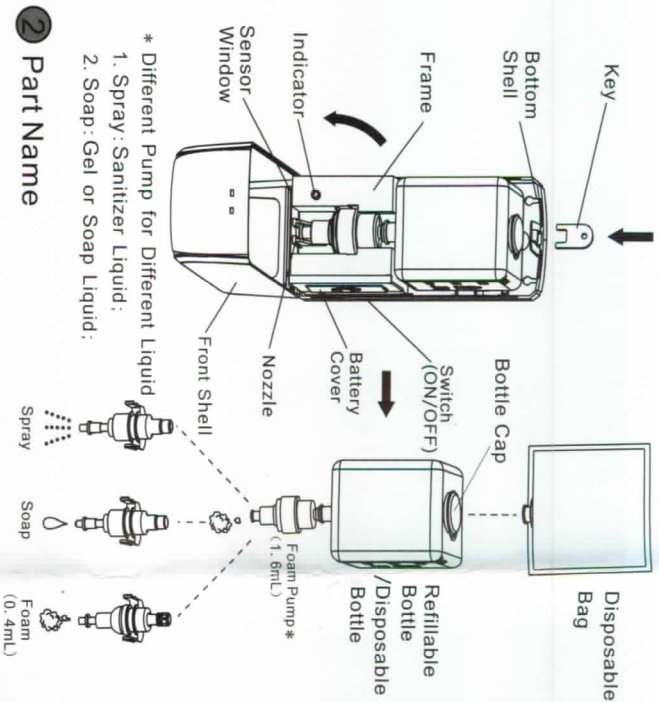
* we have different shape but same installation.

1 Packing List



* The Standard Packing is not including DC Adapter and Batteries

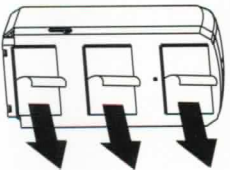
5 Install Batteries/DC Adapter



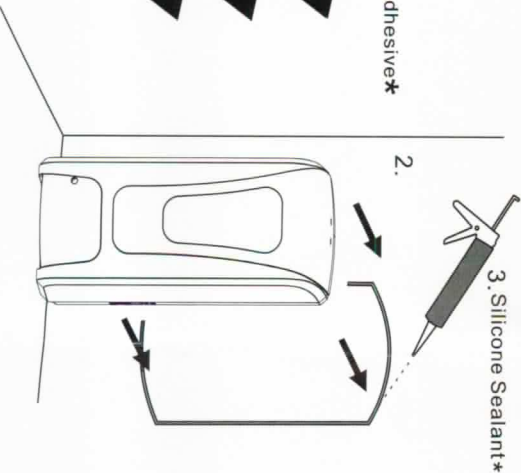
2 Part Name

* Different Pump for Different Liquid:
1. Spray: Sanitizer Liquid;
2. Soap: Gel or Soap Liquid;

1. Double-sided adhesive* (Optional)



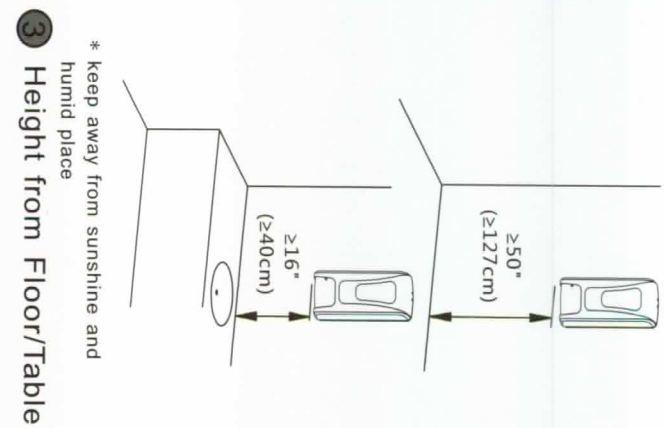
2.



3. Silicone Sealant*

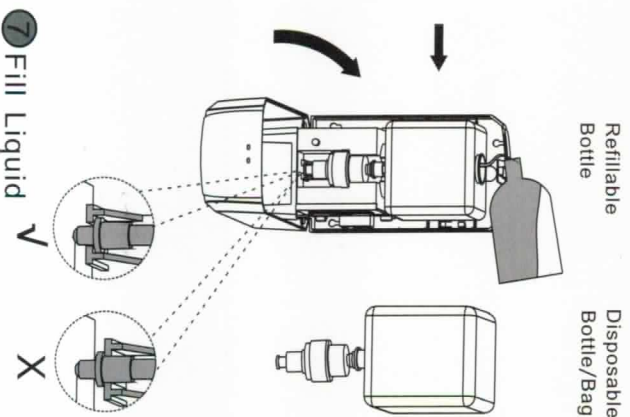
* The standard Packing is not including Double-sided adhesive and Silicone sealant

6 Installation with Adhesive Backing (no screws)

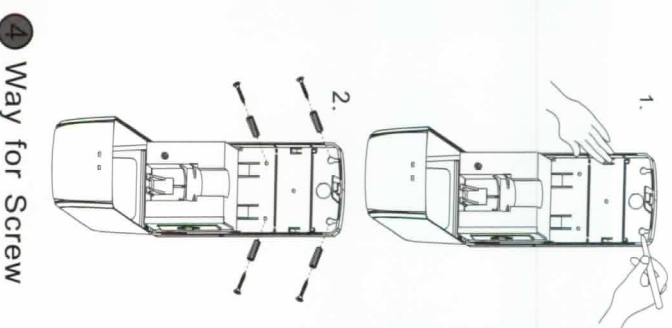


* keep away from sunshine and humid place

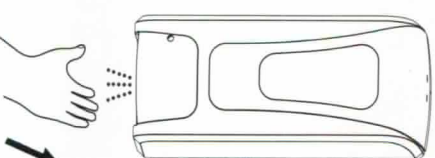
3 Height from Floor/Table



7 Fill Liquid



4 Way for Screw



- UV disinfection
- LED Light:
 1. green color 5 seconds flush: working condition
 2. red color 5 seconds flush: low power for battery and change;
 3. red color 2 seconds flush: something under sensor and remove it;
- Sensing Distance: 8-12cm

8 Enjoy hand sanitizing