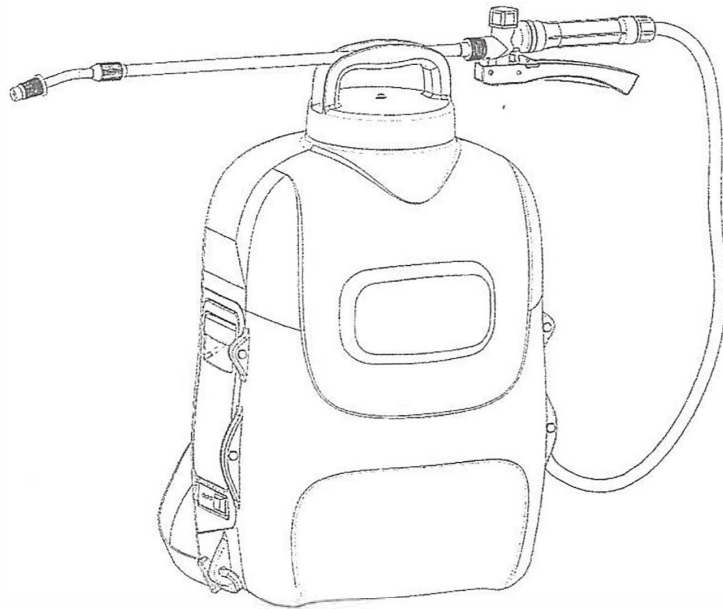


# Gencie™

## Instruction Manual For Battery Sprayer

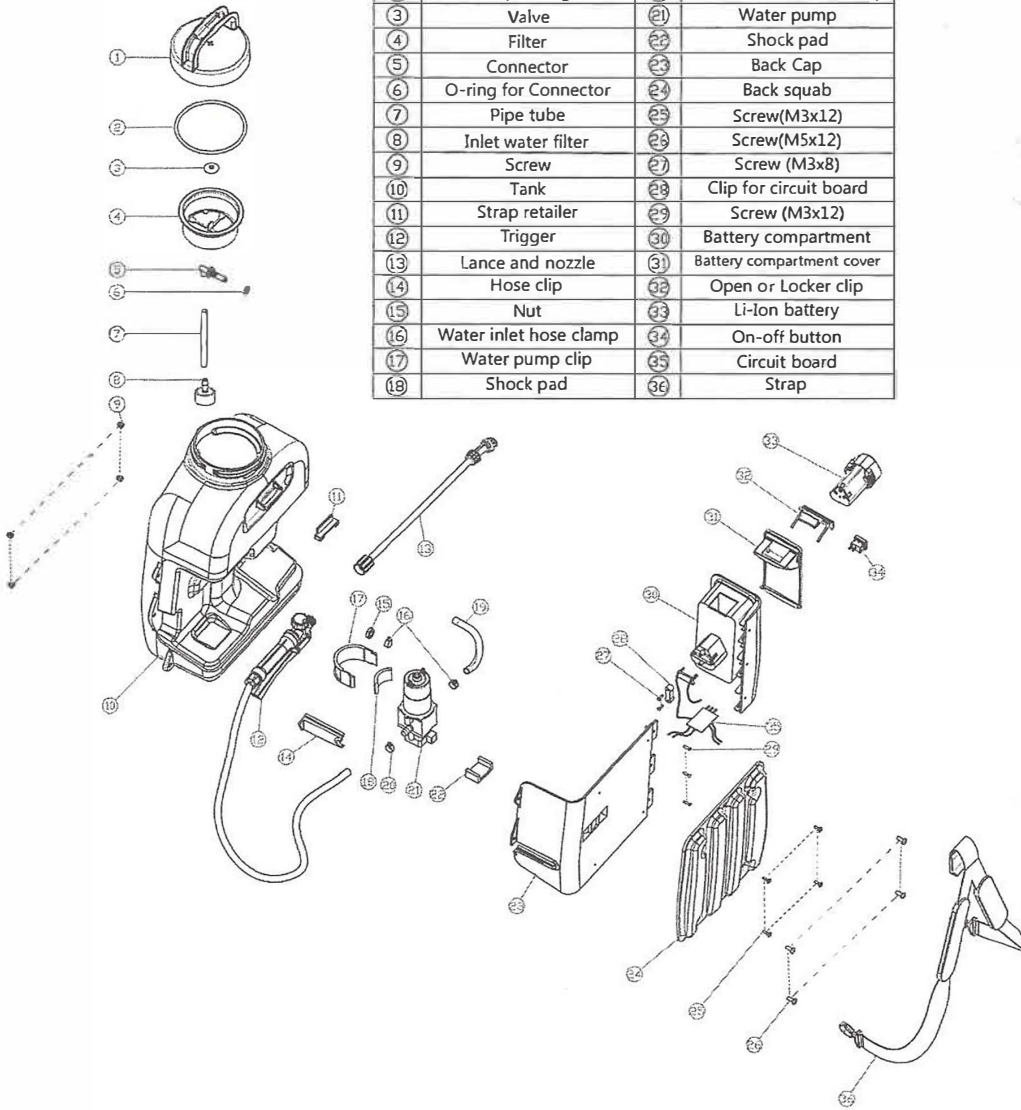


**!** **Warning:** For your personal safety,  
READ and UNDERSTAND before using.

SAVE THESE INSTRUCTIONS FOR FUTURE REFERENCE.

Assembly:

No.	Name	No.	Name
1	Cap	19	Hose
2	Cap O-ring	20	Water outlet hose Clamp
3	Valve	21	Water pump
4	Filter	22	Shock pad
5	Connector	23	Back Cap
6	O-ring for Connector	24	Back squab
7	Pipe tube	25	Screw(M3x12)
8	Inlet water filter	26	Screw(M5x12)
9	Screw	27	Screw (M3x8)
10	Tank	28	Clip for circuit board
11	Strap retailer	29	Screw (M3x12)
12	Trigger	30	Battery compartment
13	Lance and nozzle	31	Battery compartment cover
14	Hose clip	32	Open or Locker clip
15	Nut	33	Li-Ion battery
16	Water inlet hose clamp	34	On-off button
17	Water pump clip	35	Circuit board
18	Shock pad	36	Strap



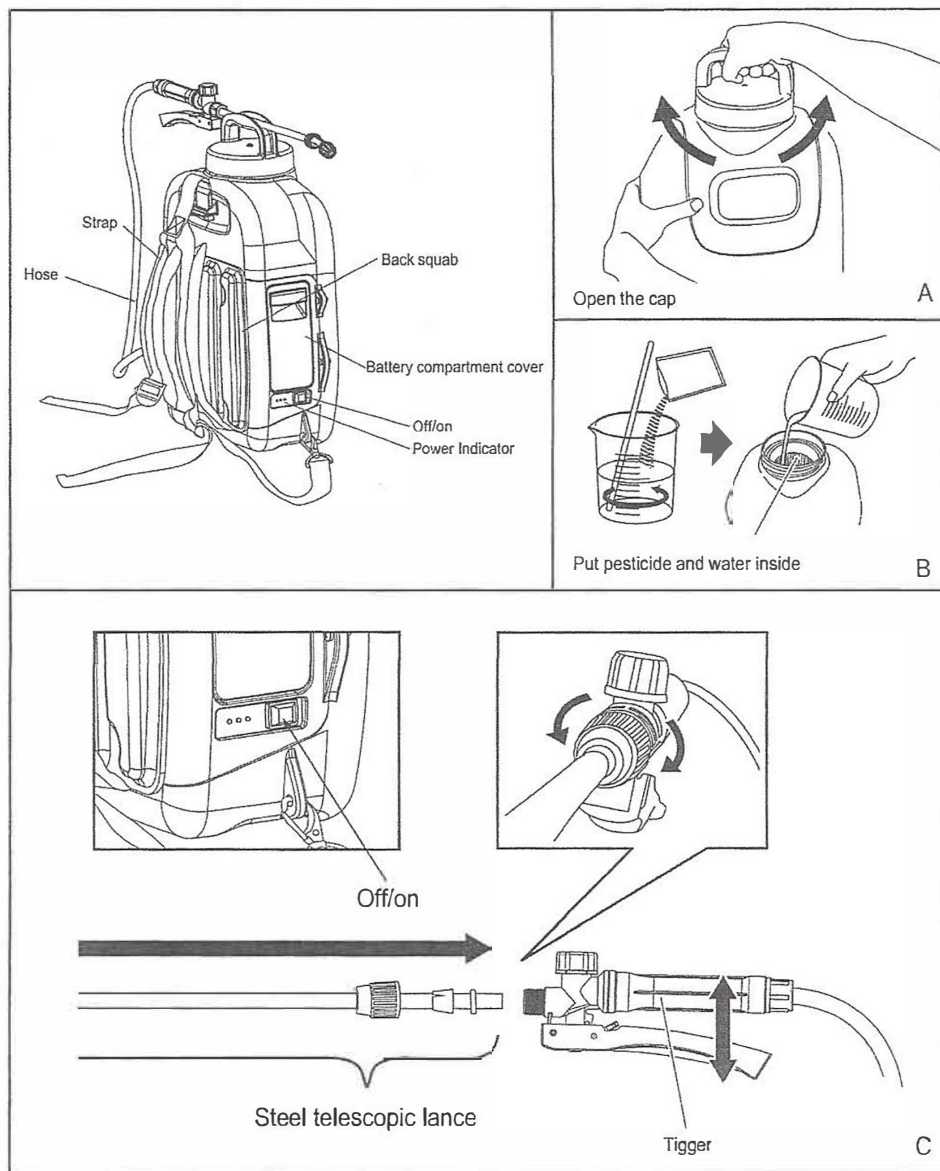
### Safety instructions and cautions for lithium battery:

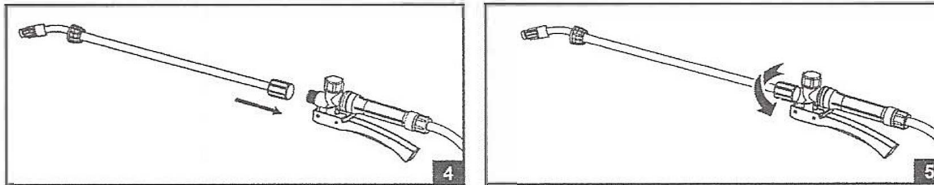
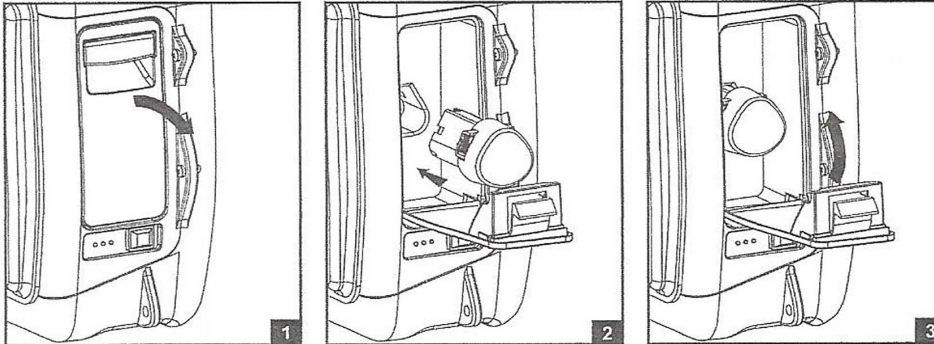
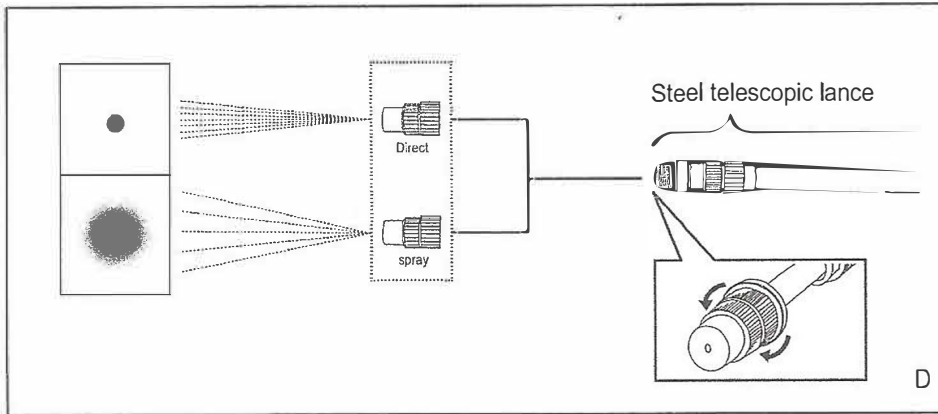
- Lithium battery needs to be charged indoors not outdoors, so as to avoid accidents.
- When the lithium battery needs charging, please take it out from the product, and plug into the charger, if the light turns red, which shows it's charging, when the light turns green, which means it's full charged.
- The charger can only be used with the suitable battery, strictly forbidden for other use, in order to avoid overcharge or shorten the service life, the battery needs to be remove from the outlet when it's full charged.
- Please use the charger in one set, because if you use other charger, the battery can not work properly, even worse, it can cause a shorter service life, fire or explosion.
- If you think the charger or lithium battery has been damaged or can not work properly, please contact the manufacturer or distributor at once, do not use the damaged ones, in order to avoid unnecessary loss.
- For completely uncharged lithium battery charging, need according to the capacity of the battery to determine the charging time, if more than expected charging time, charging indicator light is still no response, immediately unplug the power adapter.
- When charging the lithium battery, it is best not to discharge, which can avoid shorten the service life of lithium batteries.
- If long time no use Lithium-ion battery pack, will be reduced the storage batteries in the battery gradually, while reducing the amount of is very low, but the best to charge once every six months, in order to avoid the lithium battery power completely exhausted damage internal structure, affect the normal use of lithium battery.
- Store a cool and dry environment, room temperature 15 to 35 °C, environment humidity 65%

### Warning:

- It is forbidden to save the battery into seawater or water, should be placed in a cool, dry environment when not in use.
- It is forbidden to put the battery near the heat source, such as fire, heater, etc.
- It is forbidden to battery positive and negative reversed use.
- It is forbidden to throw the battery in fire or heat in the container.
- It is forbidden to use metal to connected battery cathode short circuit directly.
- It is forbidden to transport or storage the battery with metal.
- It is forbidden to knock, throw or stamp on the battery.
- It is forbidden to use where strong electrostatic and strong magnetic field.
- When battery charging ,temperature can't be lower than 0°C, and also can't be higher than 40°C
- If Lithium battery sprayer used in winter season ,working time will be less than other season ;

Operating instructions:



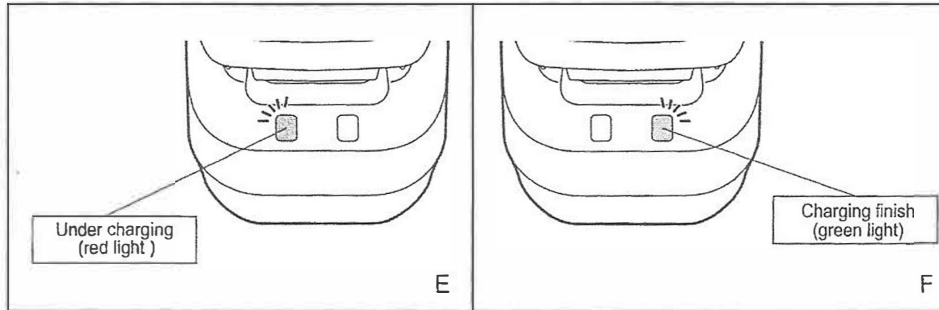


**Assembling instruction:**

1. Please open the battery cap as pic 1 in above.
2. Put battery(NO.33 in page 2) inside the machine. Please refer to pic 2 in above.
3. Close the battery cap as pic 3 in above.
4. Take out lance and trigger as pic 4 in above.
5. Screw the nuts in lance to the trigger as pic 4 in above.
5. Pull out the battery when charging finish, disconnect above.

**How to use charger:**

1. Pull out the run out battery.
2. Put the battery into charger.
3. Connect the charger to power.
4. It is under charging when the red light (E) comes on, after around 150minuts green light (F) on means charging finish.
5. Pull out the battery when charging finish, disconnect power.



**PRODUCT INFORMATION/TECHNICAL DATA:**

Item No.	5010A	5016A	5010B	5016B
Total capacity	10.0L	16.0L	10.0L	16.0L
Voltage	12V	12V	12V	12V
Curren flow	1.5A	1.5A	H: 1.5A L: 1.0A	H: 1.5A L: 1.0A
Battery capacity	2.6 Ah	2.6 Ah	2.6 Ah	2.6 Ah
Work time	100min	100min	H:100min L:160min	H:100min L:160min
Charging time	150min	150min	150min	150min
Flow	0.95 L/min	0.95L/min	H:0.95 L/min L:0.7L/min	H:0.95L/min L:0.7L/min
Net weight(1 pc)	2.75 kg	3.1 kg	2.75 kg	3.1 kg
Packing(pcs)/carton	1	1	1	1
Packing size(cm)	34.5 x 21.5 x 51	34.5 x 26 x 54.5	34.5 x 21.5 x 51	34.5 x 26 x 54.5

## Maintenance of equipment:

1. Please take out the battery after use and recharge it if no power inside.
2. Clean the machine by water.
3. Put the machine in a cool and dry place.

## Troubleshooting:

Problems	Causes	5010/5016
The motor fails to start after being powered on	1. The power cables come off. 2. The battery is out of power. 3. The power switch has been damaged.	1. Dismantle the base to connect the cables. 2. Charging 3. Replace the switch
Water can not go out	Filter maybe clogged	Open the bottle and take out the filter to clean it

## SAFETY INSTRUCTIONS

### CAUTION:

CONTENTS UNDER PRESSURE. READ THIS BEFORE OPERATING.

- Always wear protective clothing, gloves and mask when spraying.
- Suitable measures must be taken to keep the unit out of the reach of children.
- If spraying in light wind conditions, always spray with the wind blowing the spray away from you.
- Do not spray contents of sprayer on persons or animals.
- Ensure all parts are intact and the temperature of the liquid under 40°C . before each use.
- Chemical sprays are dangerous if swallowed or come in contact with the skin, always refer to the chemical supplier safety instructions or contact the poisons information centre or doctor immediately.
- Always release pressure before refilling, servicing or storing.
- Do not leave sprayer (filled, empty or pressurized ) unattended in direct sunlight.
- Not to be used to spray solvents or flammable liquids.



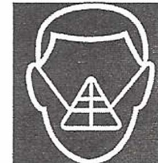
WEAR  
PROTECTIVE  
CLOTHING



WEAR  
EYE  
PROTECTION



WEAR  
GLOVES



WEAR  
A.S APPROVED  
FILTER MASK

7

For technical information please call customer support @ 239-226-1294  
[www.gencie.com](http://www.gencie.com)