

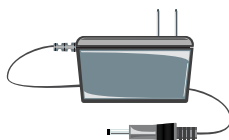
ESV1200 Quantum Illuminator Cabinet

INSTRUCTION MANUAL





EVS1200 Illuminated Cabinet

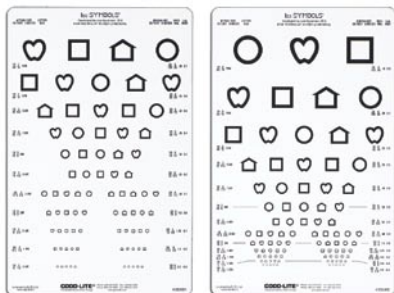


Universal Power Supply

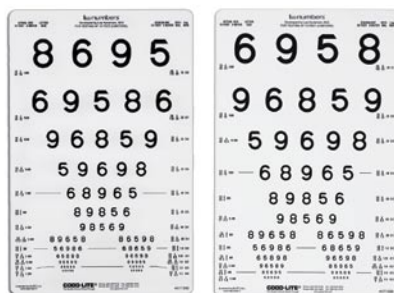


Battery Pack: Optional

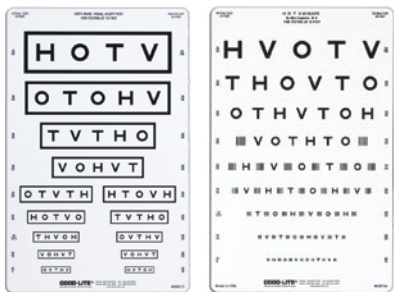
Lea SYMBOLS® Charts



Lea-numbers® Charts



HOTV Charts



Letter Charts

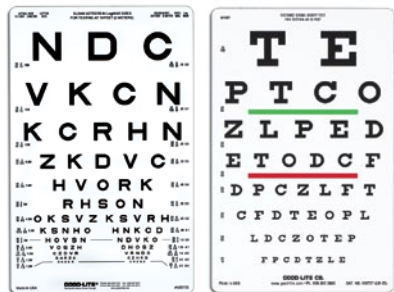




TABLE OF CONTENTS

Introduction	2
Service & Important Safeguards	2
Optional Battery Pack Use and Care	3
ESV1200 Use Instructions	4
Mounting Instructions.	5
Maintenance and Service.	6
Cleaning and Care	6
Disposal of Unit	6
Important Tips and Storage	6
Accessories, Charts and Replacements	7
Warranty	7
Safety	8
Electromagnetic Compatibility	8
CE Compliance	9
Legal Notices	9

Product Specifications

ESV1200 12 Volt, DC

Power Adapter Rating: 120VAC, 60 Hz AC (100VAC-240VAC, 47-63Hz with proper adapter)

Power Adapter Voltage: 12 Volt DC

Dimensions: 9.25"W x 15"H x 3.25"D (38.1 cm x 23.5 cm x 8.3cm)

Weight: 7 lbs. (3.2 kgs.)



Introduction

CONGRATULATIONS on your purchase of a top-quality Good-Lite® product which has been thoroughly tested to meet our exacting quality control standards. The **ESV Series Cabinets** are designed to test high and low contrast visual acuity. They can be used to test visual acuity in preschool through adult populations. The ESV Series Cabinets are CSA and CE approved.

The ESV Series Cabinets can be powered with the power adapter or the optional rechargeable lead acid battery. These guidelines and safeguards help insure that your new ESV Series Cabinet operates effectively. Please read all instructions carefully before using your ESV Series Cabinet. Please take a few moments to review the following IMPORTANT INFORMATION before using this tool.

READ ALL INSTRUCTIONS CAREFULLY BEFORE USING THIS PRODUCT. SAVE THESE INSTRUCTIONS FOR FUTURE REFERENCE. FAILURE TO FOLLOW ALL INSTRUCTIONS, WARNINGS AND CAUTIONS MAY RESULT IN SERIOUS PERSONAL INJURY, PROPERTY DAMAGE AND/OR MAY VOID YOUR WARRANTY.

ESV1200 Service & Important Safeguards

Service Information

WARNING: Any repairs requiring disassembly should be performed by Good-Lite®. There are no user serviceable parts.

WARNING: To reduce the risk of fire, electrical shock, injury, or damage to your machine:

Do not use if unit is damaged in any way.

Use this product only for its intended use as described in this manual.

Never leave your ESV Series Cabinet plugged in for long term storage.

Never insert or drop any object into any opening on the device.

Do not use on or near hot surfaces.

Only use the power adapter supplied to power this unit. Do not use the supplied power adapter with any other appliance.



To protect against risk of electrical shock, do not put power adapter in water or other liquid.

To avoid damage to the power adapter and cord, never carry the charger by the cord or yank to disconnect from an outlet. Instead, firmly grasp the charger body and pull to disconnect. Do not pull cord around sharp edges or corners.

Do not allow the cord to hang over the edge of a table or counter or touch hot surfaces.

Do not operate with a damaged cord or power adapter.

Do not use or store power adapter outdoors. Use the ESV Cabinet in a clean, dry place. Do not expose power adapter to rain, or extreme temperatures.

Optional Battery Pack Use and Care

- Do not charge in a gas chamber.
- Do not short the battery terminals.
- Do not incinerate.
- Flush with water at once is contaminated with electrolyte (acid).
- Battery must be recycled. For recycling information inside the USA, call 800-278-8599.

Warning

- Only use power supply recommended by the manufacturer (Good-Lite) to charge the battery.
- Follow the instructions properly during charging and using the battery.
- Battery shall not be used and charged in wet location.
- Do not charge and use damaged battery.
- Do not expose battery to fire, excessive hot ambient, sunlight, etc.
- Do no charge the battery and operate the ESV1200 in a hazardous location.
- Do not try to open and remove the battery from the metallic enclosure.
- The battery shall be charged indoors only.
- Allow adequate ventilation around the battery.
- Do not expose the battery to static discharge.
- Use the battery only with the manufacturer's specified equipment.
- Battery must be recycled in accordance with manufacturer's specifications.



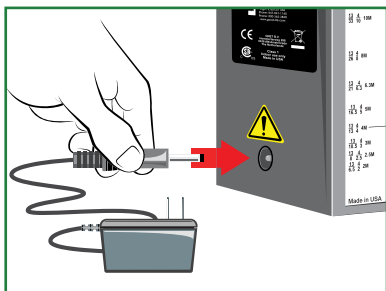
For best results, operate the power adapter in a location where the temperature is more than 50 degrees F (10° C) but less than 100 degrees F (37° C).

Disconnect power adapter from power supply when not in use, and before any routine cleaning or maintenance.

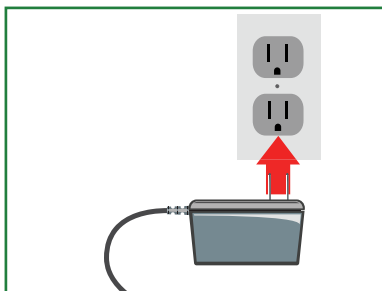
The use of extension cords is not recommended. Plug the power adapter into a properly grounded standard electrical outlet (120v/60Hz) only.

If unit is not working as it should, or has been dropped or damaged in any way, return it to Good-Lite® before using.

Instructions for Use *Without* Optional Battery Pack

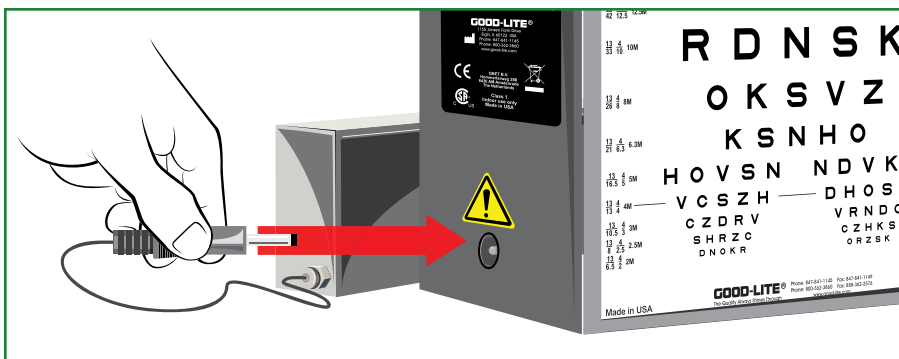


Step 1: Plug universal power cord into ESV1200.



Step 2: Plug universal power cord into wall socket.

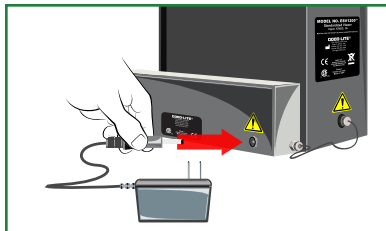
Instructions for Use *With* Optional Battery Pack



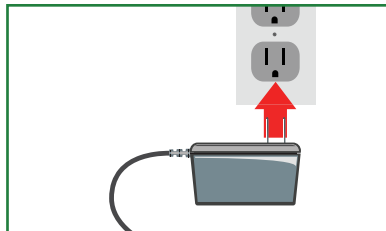
Step 1: Plug battery pack into ESV1200



Instructions for Recharging Optional Battery Pack



Step 1: Plug universal power cord into battery pack.



Step 2: Plug universal power cord into wall socket.

NOTE: Charge battery pack 24 hrs before first time use.

Mounting Instructions

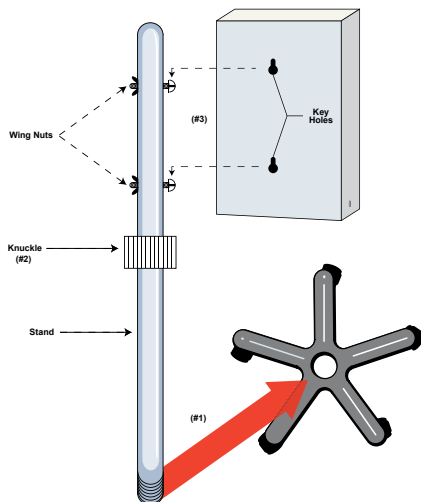
Mounting to a Wall

FAILURE TO SECURELY MOUNT CABINET EITHER TO A WALL OR OPTIONAL CASTER BASE (#500004) MAY RESULT IN SERIOUS PERSONAL INJURY, PROPERTY DAMAGE AND/OR MAY VOID YOUR WARRANTY.

The ESV1200 Cabinet is designed to be mounted on a wall or optional caster base. There are two (2) keyhole slots on 8.75-inch (22.22 cm) centers on the unit for wall mounting. Use appropriate fasteners designed for mounting surface and a minimum hanging weight of 30 lbs. (14 kgs.).

Mounting to Optional Caster Base (#705000)

1. Screw stand bottom into base.
2. Loosen stand height adjustment knuckle and extend inside tube out approximately 16".
3. Position key hole slots on back of cabinet between screw heads and washers on stand, tighten with permanently affixed wing nuts.
4. Adjust stand to desired height.





Maintenance and Service

All Good-Lite® products are warranted for one year from date of original purchase against defects in materials or workmanship after normal use. Good-Lite® will, at its option repair or replace products found to be defective.

If service is necessary, return the entire unit with the remote control to the factory for authorized repair.

There are no user serviceable parts inside the unit.

Cleaning and Care

You may clean the exterior of your ESV Series Cabinet with any **NON-ABRASIVE** commercially available cleaner. Cleaners or water should **NEVER** be sprayed directly on the ESV Series Cabinet. Charts may also be cleaned in this manner. Avoid using solvents when cleaning plastic parts. Most plastics are susceptible to damage from various types of commercial solvents and may be damaged by their use. Use clean cloths to remove dirt, dust, oil, grease etc.

CAUTION: Do not at any time let brake fluids, gasoline, petroleum based products, penetrating oils, etc. come in contact with plastic parts. They contain chemicals that can damage, weaken, or destroy plastic.

Disposal of unit

EU Customers: At the end of this product's life cycle, it must be sent to a WEEE recycling center.

Important Tips & Storage

WARNING: Do not attempt to modify this unit or create accessories not approved for use with this unit. Any such alteration or modification is misuse and could result in a hazardous condition leading to possible serious injury. The ESV Series Cabinets have NO USER SERVICEABLE PARTS. Do not attempt in any way to destroy or disassemble unit or any of its components. Failure to follow these instructions may void your warranty agreement.





NOTE: Any repairs requiring disassembly must be performed by Good-Lite®. Unauthorized repairs will void the warranty.

Storing the ESV Series Cabinet

The circuit board in the ESV Series Cabinet are long lasting and proper care will help to prolong the life of your appliance.

Store your ESV Series Cabinet in a clean, dry place when not in use. Do not leave in direct sunlight, or exposed to extreme heat or cold when possible.

NOTE: Remove ESV Series Cabinet from power adapter before storage. When not in use, your ESV Series Cabinet must be stored indoors, in a clean dry location sheltered from direct sunlight, extreme temperatures and rain.

Long Term Storage

Follow the above storage instructions and unplug the power adapter from the electrical outlet.

Accessories, Charts and Replacement Parts

ESV1200	ETDRS Standardized Viewer only
ESV1250	Replacement Power Pack
705000	Floor Stand with Casters
914003	Rechargeable Battery Pack for all ESV Series illuminated cabinets.

Warranty

Good-Lite® warrants this product for one year from date of purchase against any defects in material or workmanship under normal use and service, subject to conditions and limitations as described below.

Parts not covered under warranty: Charts and accessories other than manufacturing defects.

This warranty covers only normal use. Damage, defect, malfunctions or any use, which does not comply with the operator instructions, are excluded. Damage or any failure caused by repair, which is done by anyone other than Good-Lite®, shall not be covered.

The warranty obligations of Good-Lite® shall be limited to repair or replacement of the product. Good-Lite® shall not be liable or responsible



under any circumstances or in any amount for consequential or incidental damages, or for injury or damages to persons or property using or used in connection with the product or for loss of profits or other costs or expenses of any kind of character. There are no other warranties or representations by Good-Lite® other than as set forth herein, either expressed or implied and no person, firm or corporation is authorized to make any representation or incur any obligation in the name or on behalf of Good-Lite® except as stated herein.

Safety

This product is designed to meet the requirements of the following standards of safety for electrical equipment for measurement, control and laboratory use:

- CAN/CSA C22.2 No. 61010-1-04
- ANSI/UL 61010-1, 2nd Edition

Electromagnetic Compatibility

This product is designed to meet the requirements of the following standards of EMC for electrical equipment for measurement, control and laboratory use:

EMC Directive: 89/336/EEC

- Generic Emissions Standard: EN 61000-6-3: 2001
- Product Specific Emissions: EN 55022 Class B
- Generic Immunity Standard: EN 61000-6-1: 2001
- Immunity: EN 61000-4-2 Electrostatic Discharge
- EN 61000-4-3 Radiated Susceptibility
- EN 61000-4-4 Electrical Fast Transient/Burst
- EN 61000-4-5 Surge
- EN 61000-4-6 Conducted Susceptibility
- EN 61000-4-11 Voltage Dips & Interruptions
- EN 61000-3-2 Harmonic Current
- EN 61000-3-3 Voltage Fluctuations & Flicker



CE Compliance

This product meets the essential requirements of applicable European Directives, as amended for CE marking, as follows:

- 73/23/EEC; Low-Voltage Directive (safety)
- 89/336/EEC; Electromagnetic Compatibility Directive (EMC)

Refer to the Declaration of Conformity (DoC) for this product for any additional regulatory compliance information. To obtain the DoC for this product, please contact Good-Lite®.

Legal Notices

Software License

The Good-Lite® products described in this manual may include copyrighted Good-Lite® and third party software stored in semiconductor memories or other media. Laws in the United States and other countries preserve for Good-Lite® and third party software providers certain exclusive rights to distribute or reproduce the copyrighted software. Accordingly, any copyrighted software contained in the Good-Lite® products may not be modified, reverse-engineered, distributed, or reproduced in any manner to the extent allowed by law. Furthermore, the purchase of the Good-Lite® products shall not be deemed to grant either directly or by implication, estoppel, or otherwise, any license under the copyrights, patents, or patent applications of Good-Lite® or any third party software provider, except for the normal, non-exclusive, royalty-free license to use that arises by operation of law in the sale of a product

GOOD-LITE®

The Quality Always Shines Through

1155 Jansen Farm Drive
Elgin, IL 60123

Phone: 800-362-3860 Fax: 888-362-2576

Phone: 847-841-1145 Fax: 847-841-1149

www.good-lite.com



ITEM #ESV1200