

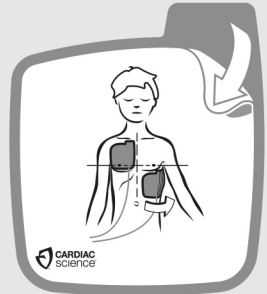
INSTRUCTIONS FOR USE

Pediatric Defibrillation Pads

Use with Cardiac Science® Powerheart® G5 AED for emergency treatment of sudden cardiac arrest.

The AED automatically identifies electrode pads connected to it and adjusts the maximum shock energy.

- For children up to 8 years of age or up to 55lbs (25kg)
- If child appears older or heavier, use non-pediatric defibrillation pads. Do not delay treatment to determine child's exact age/weight.
- Intended for short-term use (<8 hrs)
- Use before expiration date listed on package.
- The AED automatically reads the expiration date of the electrode pads, and notifies the user of expired pads.



WARNING! Do not reuse pads.

Reuse of pads may result in skin burns, improper AED performance or patient-to-patient contamination.



DO NOT open until ready to use.

DO NOT use damaged pads.

Failure to remove blue plastic completely could impact therapy delivery. Before use, check cable and connectors for damage.

DO NOT pull on the lead wires to separate the pads from the blue plastic. Not intended for use in pacing.



WARNING! Not for adult use.

Pediatric defibrillation pads are for use only with children 8 years of age or younger, or 55lbs (25kg) or lighter.

When placing pads:



Place the pad at least an inch from any implanted device.

Ensure patient's skin is clean and dry before use.



Manufactured for:

Cardiac Science Corporation
N7 W22025 Johnson Dr
Suite 100
Waukesha, WI 53186-1856 USA
www.cardiacscience.com



MDSS GmbH
Schiffgraben 41
D-30175 Hannover
Germany

English

Patents pending.

For a complete list of U.S. and foreign patents, see www.cardiacscience.com.



32°F
0°C



0086



Not made with natural rubber latex

Cardiac Science, Powerheart, the Shielded Heart logo and Rescue Ready are trademarks of Cardiac Science Corporation.

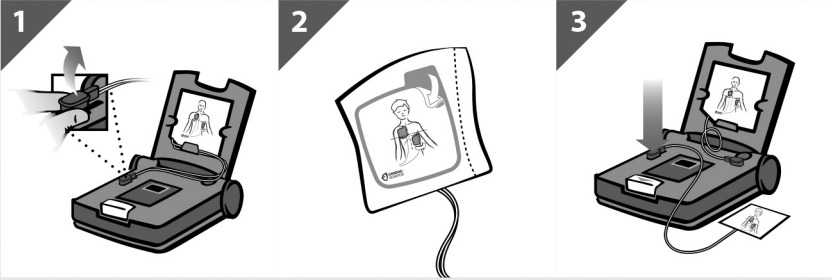
Copyright © 2014 Cardiac Science Corporation.

All Rights Reserved.

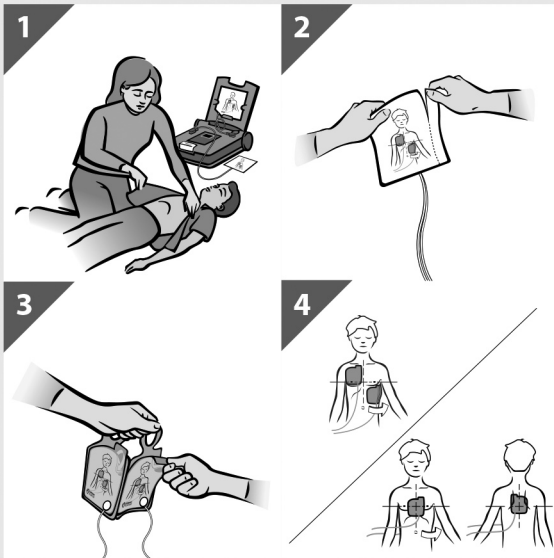


70-01631-01rA

INSTALL PEDIATRIC PADS



HOW TO APPLY PADS



AFTER THE RESCUE

RECONNECTING THE NON-PEDIATRIC PADS

