

Couch Assembly Instructions

1. Purpose

1.1 The purpose of this procedure is to provide Customer Assembly Instructions for:

1048170

1048172

2. Safety and Handling

2.1 Standard Personal Protective Equipment

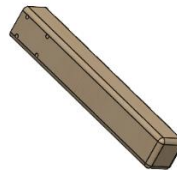
****NOTE: DO NOT USE POWER TOOLS FOR ASSEMBLY****

3. Parts

Part No.	Description	Qty
1	Couch cushion frame	1
2	Legs (Steel or Wood)	4
3	Paper Roll Holder	1
4	4 1/4" Allen Head Screw	16
5	3/4" Allen Head Screw	2
6	Flat Washer	18
7	3/16" Allen Hex Key	1
8	Wedge Bolster	1



1



2



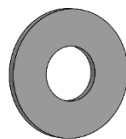
3



4



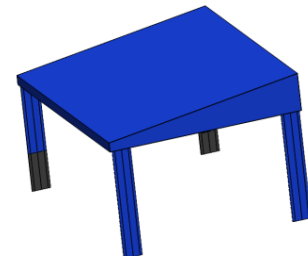
5



6



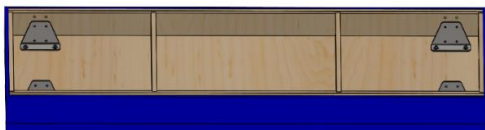
7



8

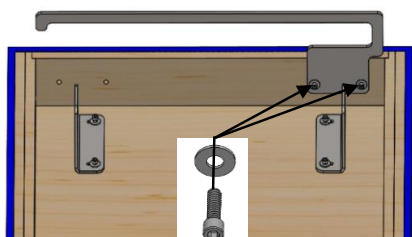
Step 1

Place the couch cushion frame (1) upside down on a flat surface. Take care to ensure that the surface is clean and smooth to avoid damage to the cushion.



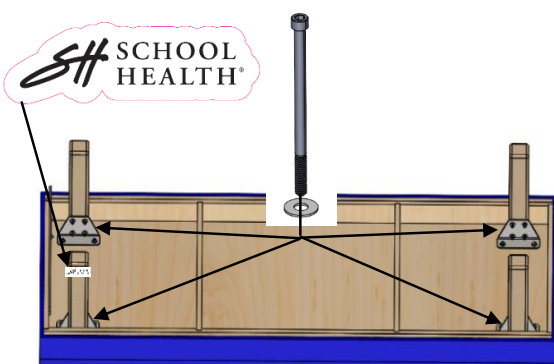
Step 2

Use the 3/4" allen head screws (5), flat washers (6), and the allen hex key (7) to fasten the paper roll holder (3) to the head of the couch cushion frame.



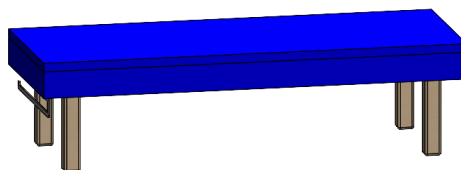
Step 3

Fasten the four legs (2) to the four corners of the couch cushion frame using the 4 1/4" allen head screws (4) and the flat washers (6). If one of the legs contains a "School Health" decal, orient the leg so that the decal faces the outside of the table. Tighten the screws with the allen hex key (7).



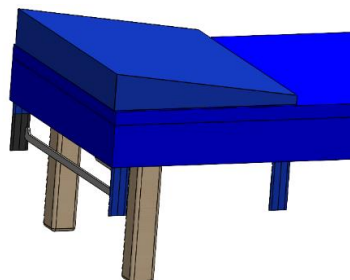
Step 4

Make sure all of the screws are tightened using the allen hex key (7). Rotate the couch upright.



Step 5

Place the wedge bolster (8) on the couch at the head end, near the paper roll holder (3). Wrap the four straps around to the underside of the couch and fasten to the velcro on the underside.



Note: The bolster can also be attached at the center of the couch.

Upholstery Cleaning & Care

⚠ CAUTION: Read carefully, improper cleaning will void the warranty. Never use alcohol-based cleaning agents.

DISINFECTING: Any disinfectant wipe that doesn't contain alcohol. We recommend CaviWipes HP, #1045601 or CaviWipes HP XL, #1045603. Rinse with clean water and dry after required dwell time.

DAY TO DAY CLEANING: A solution of 10% mild household liquid dish soap with warm water, applied with soft damp cloth. Rinse with clean water and dry.

STAINS: Dampen a soft white cloth in a one to one (1:1) solution of Fantastik® and water OR Formula 409® and water. Rub gently and rinse with a water dampened cloth.

MORE DIFFICULT STAINS: Dampen a soft white cloth with a solution of household bleach (10% bleach / 90% water). Rub gently and rinse with a water dampened cloth to remove the bleach concentration.

WHAT NOT TO USE: Using the wrong cleaning agents will VOID YOUR WARRANTY and crack, dry out, and destroy your vinyl. Do not use any cleaning agents that contain alcohol, harsh chemicals, or abrasives.

2503

Visit our website for more
health room furnishings

866-323-5465
SchoolHealth.com
@SchoolHealth

SCHOOL HEALTH®
We Supply Your Future™